

DASHBOARD INSIGHTS

| Data cleaning steps |

What is data cleaning?

When using the Qflow Dashboards, you will notice that some of the data has been aggregated and cleaned from the original "Records" data and exports, (as available elsewhere within the Qflow Web Portal).

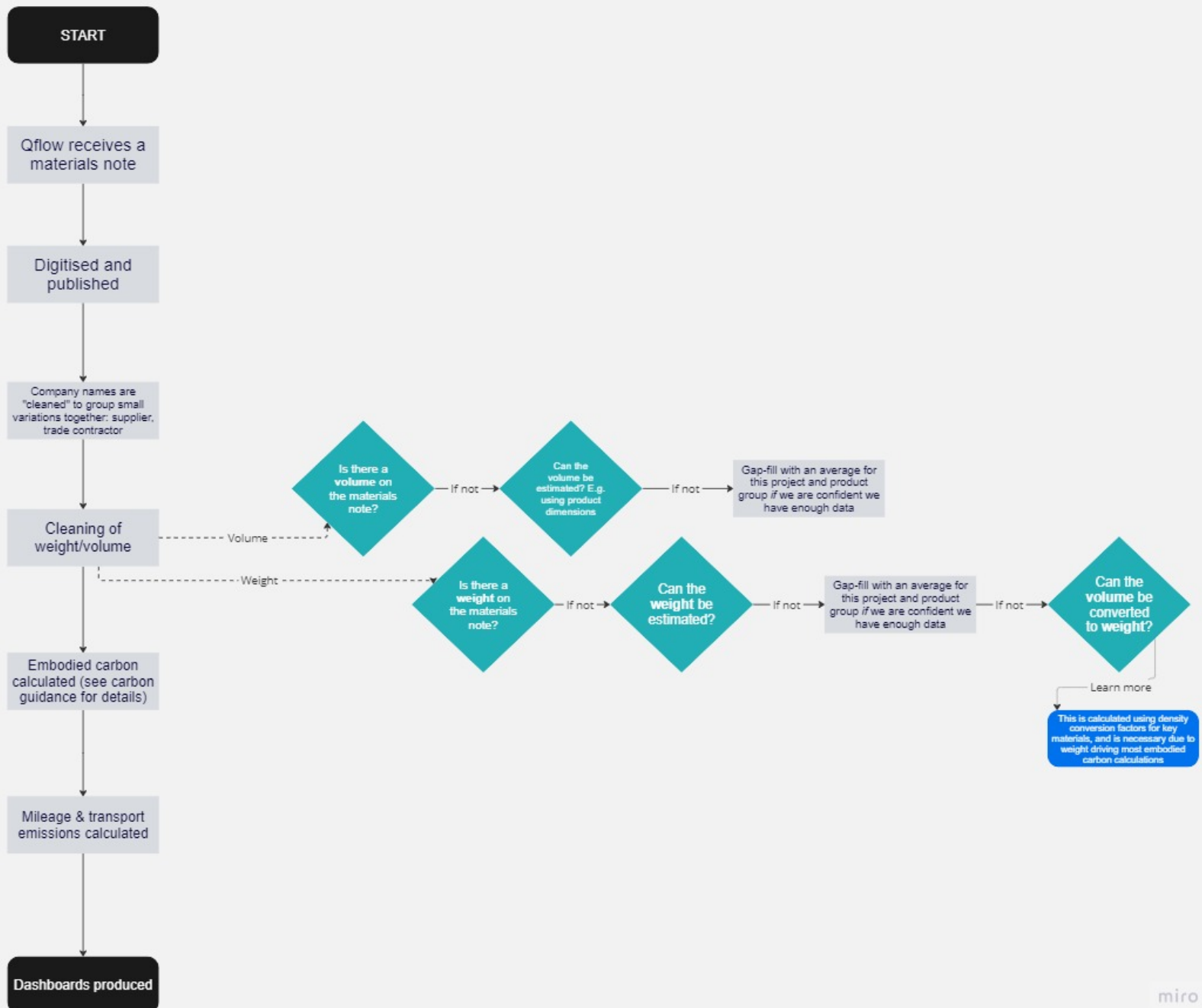
There are many cleaning steps baked in to our underlying data models, with the purpose to make this data more easily digestible and to fill in any blanks. This might be for data points such as missing volume/weight, which weren't disclosed on the original delivery documentation.

We've tried to outline some of the more important steps in our cleaning process, and if you have any further questions on these steps or other cleaning processes, please don't hesitate to contact your Qflow Customer Success Manager.

Deliveries data

Gap filling

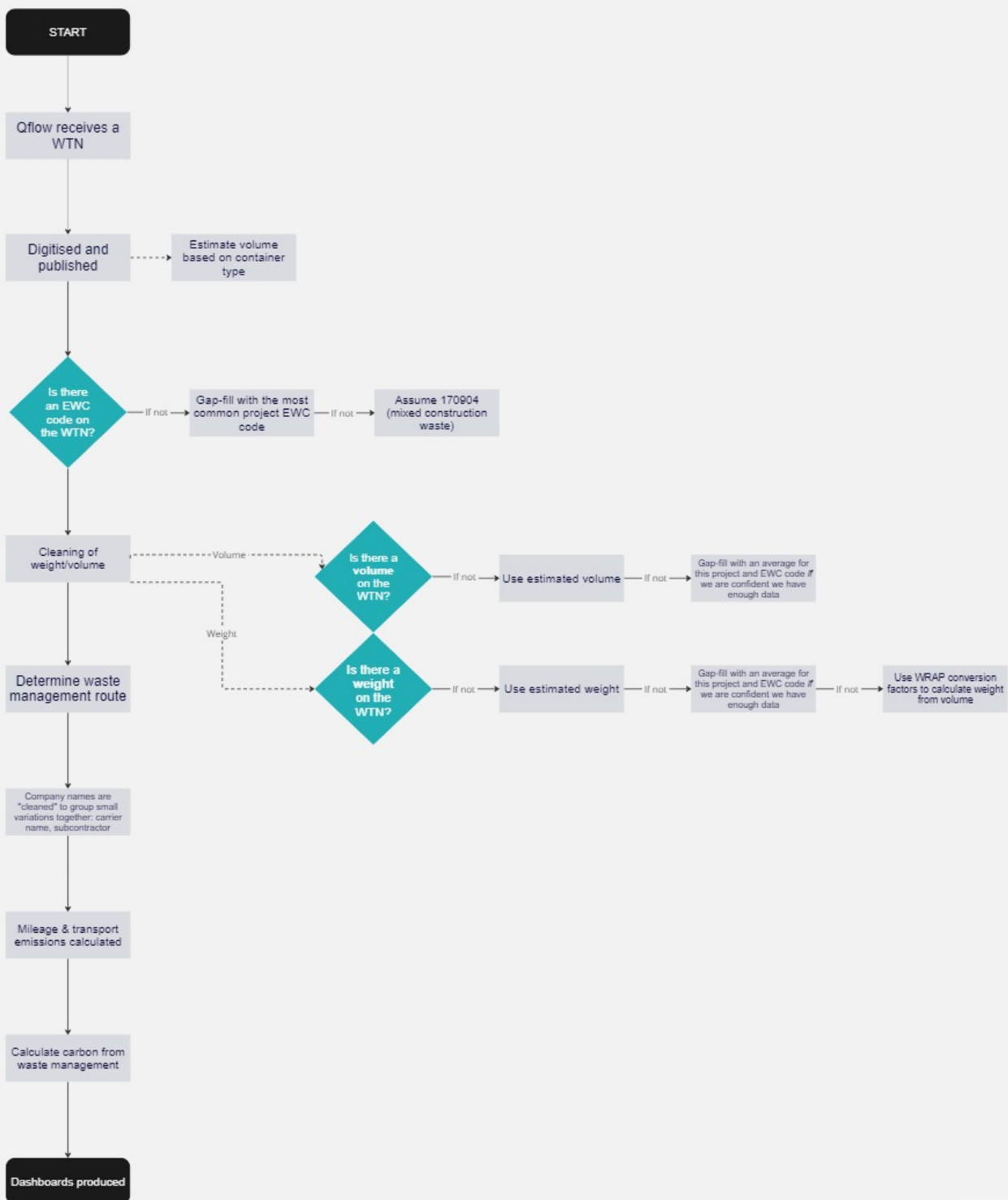
Deliveries Workflow - BI



Waste data

Gap filling

Waste Workflow - BI





If you have any questions, please don't hesitate to reach out to your Customer Success Manager, or at support@qualisflow.com