

Dashboard Insights

| Data cleaning |

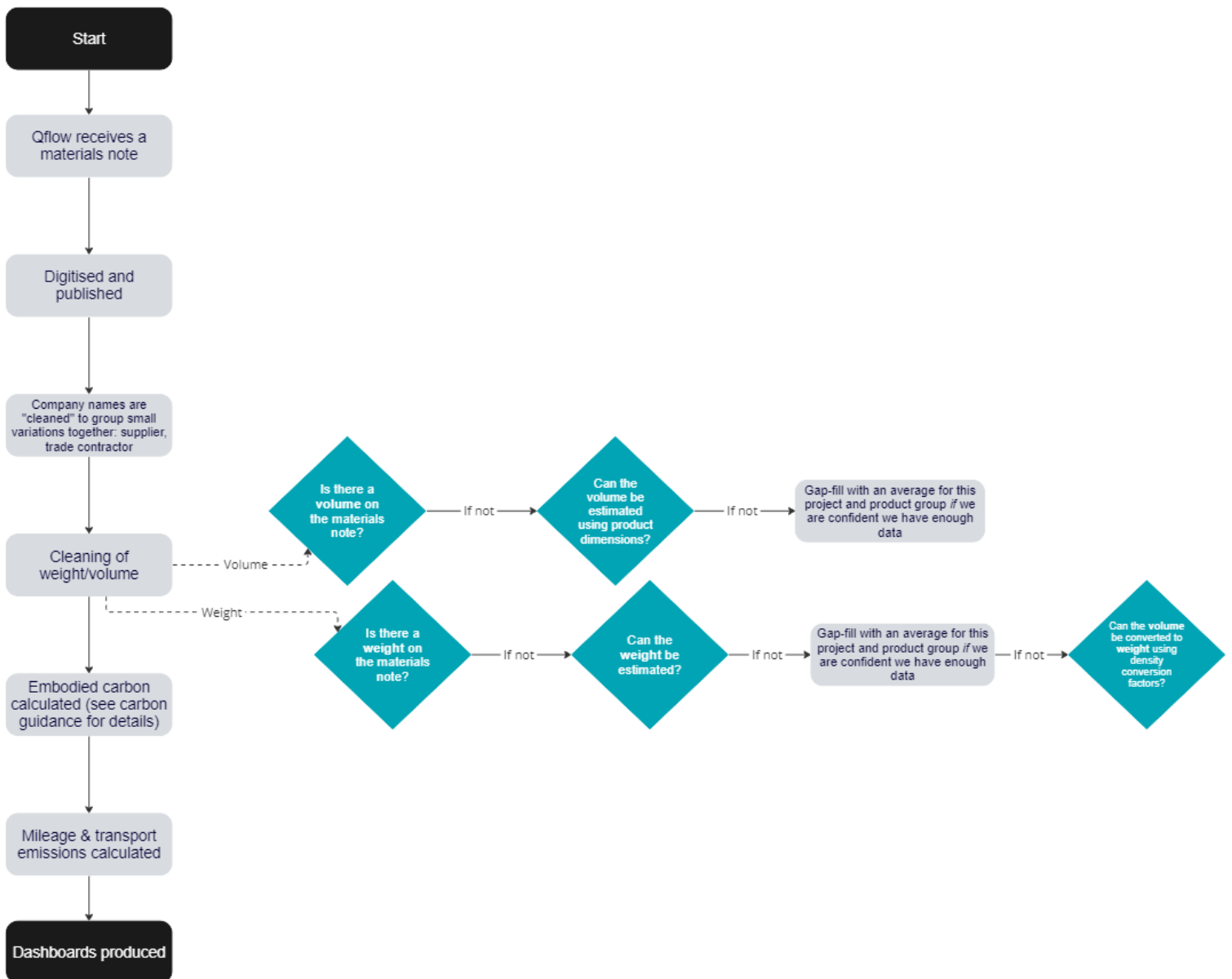
What is data cleaning?

When using the Qflow Dashboards, you may notice that some of the data has been aggregated and cleaned from the original ticket information. There are many cleaning steps, or data transformations, baked in to our system. These aim to provide you with the most valuable and digestible data. This includes the likes of tidying subcontractor names and filling in blanks for missing weights.

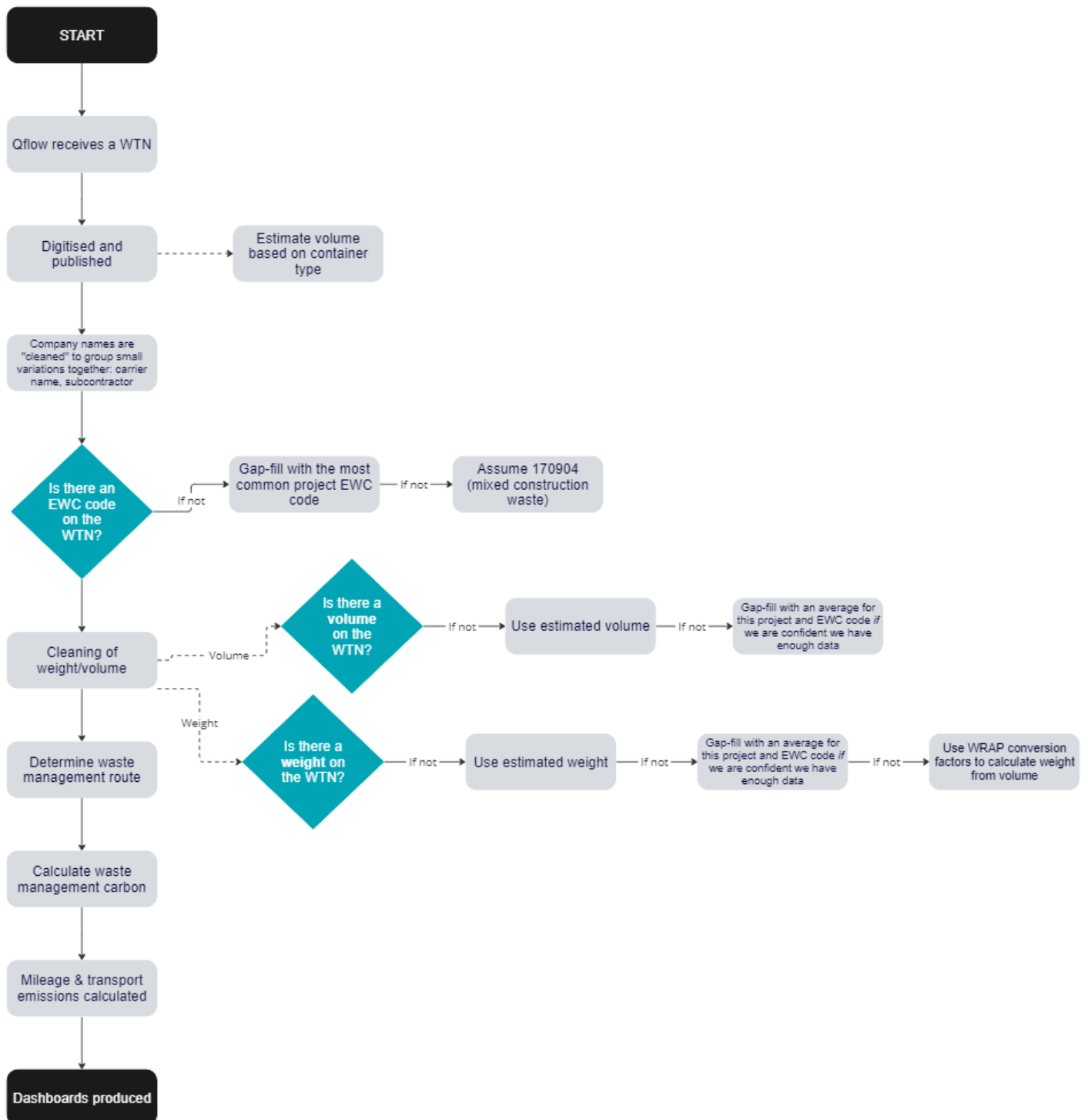
The following pages outline some of our data transformation processes to provide clean data. If you have any further questions on these steps or other cleaning processes, please don't hesitate to contact your Qflow Customer Success Manager.



Data transformations – Delivery



Data transformations – Waste





—

If you have any questions, please don't hesitate to reach out to your Customer Success Manager, or at support@qualisflow.com

